



# Breezes from the Lea March 2020

## March Social Calendar

**Fri. 6<sup>th</sup>:**  
Entertainment  
with Kelly  
Smiley



**Sat. 7<sup>th</sup>:** Tom's  
2 Course  
Carvery. Two  
Sittings



**Fri. 13<sup>th</sup>:**  
Entertainment  
with Billy  
McElveen

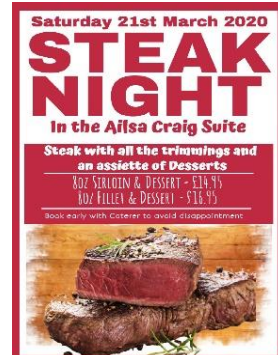
**Tues. 17<sup>th</sup>:** Lady  
Captain's Charity  
Card Evening



**Fri. 20<sup>th</sup>:**  
Entertainment  
with Laura  
Johnston



**Sat. 21<sup>st</sup>:** Fillet  
or Sirloin?  
Steak Night &  
Desserts.



**Sun. 22<sup>nd</sup>**  
**Special**  
**Mother's Day**  
**Menu**

3 Sittings in  
Lower Dining  
Room 12.30,  
3.00 & 5.30



**Local Talent Tyler  
Vance performing  
'live' from 9.15 pm**

**Dressed Dining/Tablecloths Book with Caterer**

**Fri. 27<sup>th</sup>:**  
Entertainment with  
Ashleigh Kirkpatrick



**Sat. 28<sup>th</sup>:** Captain's  
Inaugural. **Late  
Licence.** All welcome  
to enjoy the  
Entertainment with  
Cut 'n' Two



**Indoor Bowls: Wed. 4<sup>th</sup> & End of Season Dinner Thurs 19<sup>th</sup>.**



**Bingo: Thurs. 12<sup>th</sup>**



**Ladies Bridge: Tuesday 10<sup>th</sup> & 17<sup>th</sup> (Lady Captain's Charity Card Evening)**

Latest details on all social events can be found on our website at: [www.carnaleagolfclub.com/clubhouse/Events](http://www.carnaleagolfclub.com/clubhouse/Events)



**Rugby Special - All Saturdays with 6 Nations matches - available for all matches being shown that day - £7 for a Pint & Bowl of Stew or Soup (with a roll) - See Robert for tickets**

### Subscriptions 2020.

Thanks to all members for prompt renewals of this year's subscriptions.

**Please note that full members who have not yet paid their subscription are not permitted to use the course**

Carnalea Golf Club, Station Road, Bangor BT19 1EZ

Tel: 02891270368

[www.carnaleagolfclub.com](http://www.carnaleagolfclub.com)



## **Breezes from the Lea March 2020**

### **ANNUAL GENERAL MEETING:**

*The 92<sup>nd</sup> Annual General Meeting of the Club will be held in the Clubhouse on Monday 23<sup>rd</sup> March 2020 at 7.30 pm when all members will be made very welcome.*

### **Introduction to Golf/Buddy Scheme 2020 for New Members**

*The Buddy Scheme for 2020 commences week beginning 16<sup>th</sup> March with 3 sessions scheduled each week through to May. The tee has been reserved on Tuesdays at 12.00 noon, Wednesdays at 9.00 am and Thursdays at 4.15 pm. The Club will email members directly with further details closer to the time. Volunteers who could accompany some of the new members and mark cards would be most welcome. Please contact [roy\\_beattie@hotmail.com](mailto:roy_beattie@hotmail.com) if available.*

### **Golfing Union of Ireland Interclub Competitions 2020**

*Throughout the year, the club enters teams into the various GUI Interclub Competitions many of which are due to get underway shortly as we head into the new season. The competitions cater for all handicaps and the Team Captains would be delighted should you put your name forward for any of the practises, details of which are posted on the notice board in the entrance hall. If you've never given this a go previously, now is your chance and you will be very warmly welcomed.*



### **Lady Captain's Quiz**

*The Lady Captain wishes to thank all those who took part in her recent quiz night and all who contributed ballot prizes or cash donations for their overwhelmingly generous support.*



*A total of £748 was raised in aid of the Lady Captain's charity, Guide Dogs and the Ladies section, a fantastic result. Well done everyone concerned, your support is very much appreciated.*

### **New Tuesday SIXPRESS Menu**

*In conjunction with the Caterer we are launching a Tuesday SIXPRESS Menu*

*All six items listed below will be available every Tuesday for £6!!!*

*12.00 to 2.30pm & 5.00 to 7.15pm*

*Pie Of The Day & Creamy Mash, Battered Fish Goujons, Chips & Tartare Sauce, Lasagne & Coleslaw, Sole Mornay & Creamed Potato, Chicken Curry & Basmati Rice, Sausages, Mash & Onion Gravy.*

*A Vegetarian Option is Available.*



**CATERING**

### **Visitor Sign In Procedures & Membership Checks**

*It is imperative that every visitor to the golf club is signed in appropriately and is accompanied by a member on all occasions. You must record every visitor name and address clearly in the Visitor Book as well as your own name and address.*

*The Club's licence depends on every visitor being correctly signed in.*

*Staff have been asked to spot check membership status - please do not be offended should any member of staff ask you to confirm your membership at any stage. Thank you for your understanding.*